

### XR

X-ray contamination  
X-ray seal inspection  
Vision upgradeable



## VARIOUS SALES OPTIONS AVAILABLE

Purchase individual elements or combine these to create a tailored solution.

### VXR

Vision label inspection  
X-ray contamination  
X-ray seal inspection



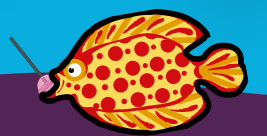
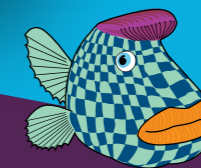
### VR

Vision label inspection



### VXR linked to a check weigher

- Dynamic check weighing and monitoring.
- Increased speeds from 120 packs to (up to) 140 packs per minute.
- Higher running speeds for reduced operator intervention.
- Option to integrate QUOR quality management software.
- Compact solution that occupies less space than a conventional metal detector and checkweigher.



# Ravenwood Packaging

Presents

# VXR<sup>®</sup>

## VISION, X-RAY AND SEAL INSPECTION WITH 'SAPPHIRE' TECHNOLOGY

CONTACT US TO FIND OUT MORE ON THE VXR,  
INCLUDING COST AND LEAD TIMES.

Ravenwood Packaging Ltd

Unit 1, Brunel Business Court, Eastern Way, Bury St Edmunds, Suffolk, UK IP32 7AJ

+44(0)1284 749144 • [marketing@ravenwood.co.uk](mailto:marketing@ravenwood.co.uk)

[www.ravenwood.co.uk](http://www.ravenwood.co.uk)

## VXR – End of the line for food recalls

We live in a world where packaging regulations are constantly evolving. Supermarkets are demanding improved quality, 100% error-free labelling and a marked reduction in recalls. This is placing increased pressure on the suppliers but for good reason. Consumer safety and brand protection has to be the main priority. Ravenwood's VXR Vision Pack Inspection equipment will not only meet these demands but will outperform manual operations for a fully streamlined process. The VXR is the 'end of line solution provider'.

### VXR USPs

- Total inspection incorporated into just 1.9m.
- Avoid damaging press coverage and extortionate costs resulting from recalls.
- Eliminate human error.
- Increase production times.
- Reject confirmation and bin full as standard for vision and x-ray rejects.
- High speed user-friendly interface for rugged factory environments.
- Pack images and pack quality information can be stored and retrieved using an open communication protocol.

### X-ray

- Heightened sensitivity for detecting dense mass / contaminants.
- Identifies foreign bodies such as glass, metal, ceramics and bone.
- Identifies contaminants through printed film, coloured trays and aluminium trays.
- Locates the correct position of the product in the tray.
- Number of products in a tray i.e. meatballs / burgers.
- Seal contamination checks optional.

### Vision

- Identifies and rejects errors, enabling operator-free end of line automation.
- Automatically detects faulty labels: printing errors and poor quality print.
- Analyses multiple label positions, quality and orientation.
- Checks all printed information: bar codes, use-by dates and traceability codes.

### Deep Learning

#### OCR solution – based on established industrial grade software.

- New module for adding to the Vision Application on the VR and VXR machines.
- Module uses Deep Learning to analyse the characters in the field of interest.
- Choice of pre-learned character sets available to rapidly decode many characters.
- Set up of the Deep Learning OCR field is similar to the conventional set up in the new or edit product screens.
- Does not require the font to be taught as is the case with conventional OCR for new fonts.
- Conventional OCR remains available in the app.
- New version requires an additional licence and USB dongle to be installed.
- Also available on new order machines as part of the machine build.



### Seal Inspection

- Detects for contaminants in the seal including foods that have 'slipped'.
- X-ray functionality must be incorporated for seal inspection.



## QUOR Quality Management System

Imagine having your KPI report available in real time – anytime and anywhere? Well, the QUOR system does just that.

The QUOR paperless QMS system can be fully integrated with the Ravenwood VXR machines. QUOR interfaces to the VR Vision for set up and line recording, giving 100% product label verification.

- QUOR allows for product selection and storage of quality data.
- Products are selected for checking on the QUOR interface.
- Line quality data is uploaded, captured, stored and reported for analysis, and traceability.
- Images of all packs produced including rejected packs are recorded and can be retrieved.
- Retailer compliant KPI reports can be generated at the click of a button.
- Data is managed securely both on and offsite, via PC based software or QUOR quality management app.

