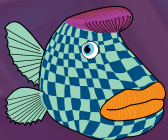




# Ravenwood Packaging

Leaders in linerless labelling, label verification  
and pack inspection systems



## About Ravenwood

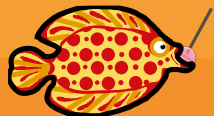
Ravenwood was founded in 2004

**We are leaders** in linerless label technology and experts in the field of pack inspection. We build, manufacture and supply Nobac linerless applicators, linerless converting equipment and the VXR vision pack inspection system. We also supply conventional self-adhesive labelling products and coding equipment. Our HQ is based in Bury St Edmunds, Suffolk with satellite offices located in the USA and Australia, supporting our dedicated global network of machinery distributors and printer partners.

## Our Commitment to Sustainability

Let Ravenwood help you on your zero waste journey

Ravenwood is actively helping to reduce the packaging and labelling industry's carbon footprint. Our technologies are good for the environment and combat waste. Linerless labels boast zero waste liner to landfill and our x-ray inspection systems, greatly reduce food waste and product recalls.





Uses single phase power and air supply of 5bar 70psi and 4cfm.

*\*General range for system. Specific label sizes and speeds agreed at time of build.*

Top Label



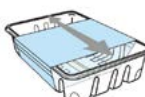
Top & Side



Top & 2 Sides



Slideable Full Wrap



D Wrap



Full Wrap Shaped



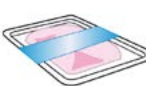
Full Wrap



Landscape C Wrap



Skin Pack Full Wrap



Skin Pack Full Wrap



Protruding up to 25mm  
above height of tray

## NOBAC 5000

Our flagship linerless applicator

**The Nobac 5000 is Ravenwood's flagship applicator and our very latest innovation, building on the core functionality of our Nobac 500 range of machinery.**

- Redesigned guarding for better security and access to the machine
- Guarding now allows for label application on protruding products
- Relocated electrical cabinet
- More space inside from moving the jacking towers
- Relocation of the jacking towers provides more options for multiple coding systems on thermal transfer and thermal inkjet, or a combination of both
- Optional thermal inkjet coding for the edge of cardboard trays
- Modular construction allows bolt-on or off, twin-head option for non-stop operation
- Independent driven belt transfer system (proven from the PP machine) for easier set up and different glue line positions
- New label reel braking system provides better reel control especially on different substrates, such as PP or thicker boards
- Optional motor adjustment
- Capable of labelling fixed weight products or linking to weigh-scales for variable-weight or check-weight products
- Utilises thin board sleeves with adhesive optimised for specific products
- Speeds achieved up to 150ppm
- Labels can be supplied in a range of weights and materials
- Many label formats including top labelling, die cut and shaped

### Key Features

Label length mm **500\*** Label/Sleeve width mm **55-125\*** Pack height mm **120\***

Speed ppm **150\*** Power Supply v/Hz **230/50** Consumption kW **0.5** Air Consumption cfm **4**



Uses single phase power and air supply of 5bar 70psi and 4cfm.

\*General range for system. Specific label sizes and speeds agreed at time of build.

Top Label



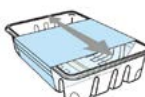
Top & Side



Top & 2 Sides



Slideable Full Wrap



D Wrap



Full Wrap Shaped



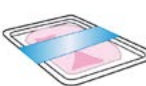
Full Wrap



Landscape C Wrap



Skin Pack Full Wrap



Skin Pack Full Wrap



Protruding up to 25mm  
above height of tray

## NOBAC 5000A

The Nobac 5000A has now joined the diverse and world-leading range of Ravenwood linerless applicators. Building its core foundation on the standard Nobac 5000.

- Customer optional addition
- Automates switching between products, pack sizes and label size
- Motorised adjustment of top lay belts, infeed guides and height adjustment
- Pre-select programmed tray sizes via operators, factory management software and weigh-price labellers
- Automatically moves to new positions
- Reduces downtime for operator to load labels
- Optional motor adjustment
- Capable of labelling fixed weight products or linking to weigh-scales for variable-weight or check-weight products
- Utilises thin board sleeves with adhesive optimised for specific products
- Speeds achieved up to 150ppm
- Labels can be supplied in a range of weights and materials
- Many label formats including top labelling, die cut and shaped

### Key Features

Label length mm **500\*** Label/Sleeve width mm **55-125\*** Pack height mm **120\***

Speed ppm **150\*** Power Supply v/Hz **230/50** Consumption kW **0.5** Air Consumption cfm **4**



Top Label



Top & Side



Top & 2 Sides



Slideable Full Wrap



D Wrap



Full Wrap Shaped



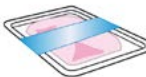
Full Wrap



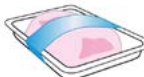
Landscape C Wrap



Skin Pack Full Wrap



Skin Pack Full Wrap



Protruding up to 25mm above height of tray

## NOBAC 5000T

Twin Head Linerless Applicator

The Nobac 5000T twin sleever is a modular system, building on the functionality of the Nobac 500T machine. The machine meets the requirements of today's retailers and packers needs for higher speeds, less downtime and quicker product changes

- Enables continuous operation with two labelling heads in line
- Ability to swap between heads to allow label reels or thermal printer ribbon to be changed on the unused head
- Allows preparation in readiness for labelling the next product
- Features two independent covers for label cutting and feeding mechanisms to enable packs to pass on either of the heads
- Continuous application of promotional labels achieved using a Trojan Flash labeller
- Many label formats including top labelling, die cut and shaped

Uses single phase power and air supply of 5bar 70psi and 4cfm.

\*General range for system. Specific label sizes and speeds agreed at time of build.

### Key Features

Label length mm **500\*** Label/Sleeve width mm **55-125\*** Pack height mm **120\***

Speed ppm **150\*** Power Supply v/Hz **230/50** Consumption kW **0.6** Air Consumption cfm **4**



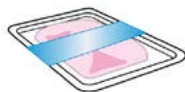
Uses single phase power and air supply of 5bar 70psi and 4cfm.

*\*General range for system. Specific label sizes and speeds agreed at time of build.*

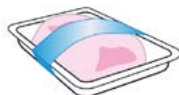
D Wrap



Skin Pack Full Wrap



Skin Pack Full Wrap



Protruding up to 25mm  
above height of tray

Skin Pack Full Wrap



Protruding up to 70mm  
above height of tray

## NOBAC 5000PP

### Pro Plus Linerless Applicator

**The Nobac 5000PP 'pro plus' is capable of labelling protruding skin packs up to 70mm above the height of the tray.**

- Brings all the environmental benefits of the Nobac system to protruding products
- Configurable to suit needs of application
- Machines are built to order and tailored to meet exact requirements
- Many label formats including top labelling, die cut and shaped

### Key Features

Label length mm **500\*** Label/Sleeve width mm **55 – 80\*** Pack height mm **70\***

Speed ppm **60-70\*** Power Supply v/Hz **230/50** Consumption kW **0.5** Air Consumption cfm **4**



Uses single phase power and air supply of 5bar 70psi and 4cfm.

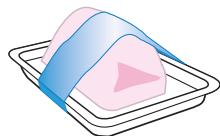
*\*General range for system. Specific label sizes and speeds agreed at time of build.*

Skin Pack Full Wrap



Protruding up to 25mm above height of tray

Skin Pack Full Wrap



Super protruding from 50mm up to 100mm above height of tray

## NOBAC 5000SP

### Super Protruding Linerless Applicator

The Nobac 5000SP 'super protruding', can label packs with products that protrude up to 100mm above the height of the tray. This enables the labelling of bulky items such as roasting joints.

- Brings all the environmental benefits of the Nobac system to super protruding products
- Configurable to suit needs of application
- Machines are built to order and tailored to meet exact requirements
- Many label formats including top labelling, die cut and shaped

### Key Features

Label length mm **500\*** Label/Sleeve width mm **55 – 80\*** Pack height mm **120\***

Speed ppm **60-70\*** Power Supply v/Hz **230/50** Consumption kW **0.5** Air Consumption cfm **4**



Uses single phase power and air supply of 5bar 70psi and 4cfm.

*\*General range for system. Specific label sizes and speeds agreed at time of build.*

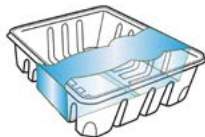
Landscape Ready Meal



Landscape Punched Ready Meal



Full Wrap Shaped



## NOBAC 5000R

### Ready Meal Linerless Applicator

The Nobac 5000R machine has been developed and tailored in line with applying ready meal packs and slideable sleeves. The applicator features all of the benefits of the Nobac 500R model with increased capabilities.

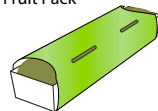
- Slightly longer than other machines in the Nobac range but still compact
- Applies ready meal sleeves including 'punched' formats
- Many label formats including top labelling, die cut and shaped

**Key Features** Label length mm **500\*** Label/Sleeve width mm **100-225\*** Pack height mm **120\***

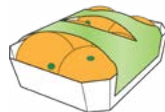
Speed ppm **65\*** Power Supply v/Hz **230/50** Consumption kW **0.5** Air Consumption cfm **4**



Landscape Narrow  
Fruit Pack



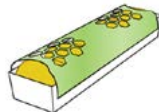
Landscape Fruit Pack



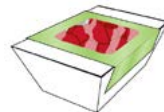
Landscape Euro  
Fruit Pack



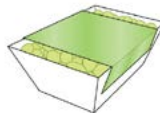
Landscape Lattice  
Fruit Pack



Landscape Window  
Fruit Pack



Landscape Grape Pack



Uses single phase power and air supply of 5bar 70psi and 4cfm.

\*General range for system. Specific label sizes and speeds agreed at time of build.

## NOBAC 5000L

### Linerless Fruit Lid Applicator

- Alternative packaging concept for fruit and vegetables sold in single use plastic bags
- Suitable for top fruit, avocados, tomatoes, kiwis, onions and salad potatoes
- Can be used as a standalone labeller for fixed weight applications or connected to a weigh price labeller for catch weight and average weight applications
- Speeds achieved up to 60 – 70ppm
- Coding via a Viper TIJ system
- Lids supplied in a range of weights to suit trays and applications

**Key Features** Label length mm **500\*** Label/Sleeve width mm **100-225\*** Pack height mm **120\***

Speed ppm **70\*** Power Supply v/Hz **230/50** Consumption kW **0.5** Air Consumption cfm **4**



Salami Full Wrap Label



### NOBAC 5000S

#### Salami Linerless Applicator

**The Nobac 5000S can apply linerless labels to circular products such as salami, haggis and chubs with diameters ranging from 40mm – 80mm, with change part tooling.**

- Change parts are specific to each diameter of product but are mounted on a quick change system
- Change parts are supplied in four sizes as specified by the customer with additional parts available upon request
- Machine can be fitted with a thermal transfer code and connected to a weigh-price labeller for printing variable weight information and other thermal print
- Many label formats including top labelling, die cut and shaped

*Uses single phase power and air supply of 5bar 70psi and 4cfm.*

*\*General range for system. Specific label sizes and speeds agreed at time of build.*

#### Key Features

Label length mm **500\*** Label/Sleeve width mm **55-80\*** Cylinder length mm **150-300\***

Speed ppm **100\*** Power Supply v/Hz **230/50** Consumption kW **0.5** Air Consumption cfm **4**



Envelope Tray



*Uses single phase power and air supply of 5bar 70psi and 4cfm.*

*\*General range for system. Specific label sizes and speeds agreed at time of build.*

## NOBAC 5000E

### Envelope Linerless Applicator

**The Nobac 5000E machine has been developed and tailored in line with applying envelope styled sleeves. The applicator features all of the benefits of the Nobac 500E model with increased capabilities.**

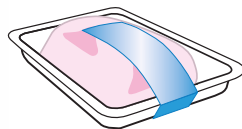
- Slightly longer than other machines in the Nobac range but still compact
- Applies envelope sleeves including 'punched' formats
- Many label formats including top labelling, die cut and shaped

**Key Features** Label length mm **500\*** Label/Sleeve width mm **100-225\*** Pack height mm **120\***

Speed ppm **65\*** Power Supply v/Hz **230/50** Consumption kW **0.5** Air Consumption cfm **4**



Skin Pack C-Wrap



*Uses single phase power and air supply of 5bar 70psi and 4cfm.*

*\*General range for system. Specific label sizes and speeds agreed at time of build.*

## NOBAC 5000V

Vertical Linerless Applicator

**The Nobac 5000V has been developed to run c-wrap linerless labels only. It is user friendly and compact in size with a footprint at just over one metre square.**

- Applies c wrap linerless labels to shrink wrap and trayed whole birds
- Also applies c wrap linerless labels to a variety of MAP and VSP trays
- Due to the application method, the 5000V can apply labels with a large back panel
- Application speeds up to 80ppm
- Can be linked to weigh scales
- Able to print catch weight and fixed weight information when a coder is fitted

### Key Features

Label length mm **300\***   Label/Sleeve width mm **55\***   Pack height mm **125\***

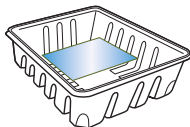
Speed ppm **80\***   Power Supply v/Hz **110/240V**   Consumption kW **0.5**   Air Consumption cfm **4**



*Uses single phase power.*

*\*General range for system. Specific label sizes and speeds agreed at time of build.*

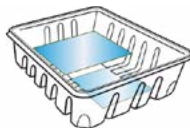
Top Label



Base Label



Top and Base Label



## NOBAC 1500

Linerless top and base labeller

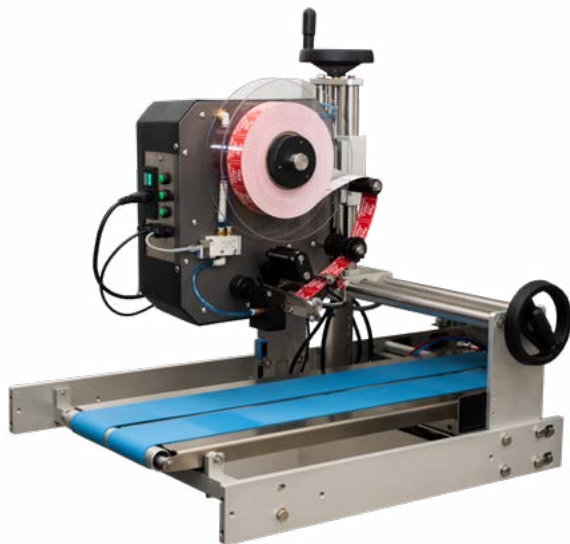
**The Nobac 1500 linerless labelling machine offers a cost efficient and high-speed alternative to standard self-adhesive top and (or) base labellers.**

- Applies labels across all food retail packs requiring top and/or base labels
- Label weights range from 100 – 200gsm in both paper and plastic
- Option to link weigh price labellers for catchweight, fixed weight or average weight labelling
- Supplied as a standalone top labeller or top and (or) base with an integral conveyor
- Airless – low cost of ownership
- Linerless label pricing is approximately 25% cheaper than traditional self-adhesive top labels

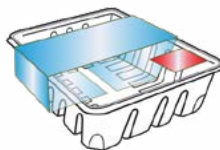
### Key Features

Label length mm **100\*** Label/Sleeve width mm **150\*** Pack height mm **300\***

Speed ppm **150\*** Power Supply v/Hz **240/50** Consumption kW **N/A** Air Consumption cfm **N/A**



Promo Flash Label



Nobac 40 mounted to a Nobac 5000 outfeed conveyor.

*Uses single phase power and air supply of 5bar 70psi and 4cfm (dependent on machine type).*

*\*General range for system. Specific label sizes and speeds agreed at time of build.*

## NOBAC 40

### Linerless Promo Flash Labeller

**The Nobac 40 linerless applicator is the sustainable and cost-effective alternative to traditional self-adhesive flash labellers.**

- Integrates to a Nobac 5000 linerless applicator
- Line speeds reach 40 metres per minute
- Various mountings available
- Standard beak apply system with optional 'blow down' unit
- Compressed air required for Vac applicator head version onl

*\*DMT - dependent on machine type*

Label length mm **40\*** Label/Sleeve width mm **40\*** Pack height mm **N/A** Speed ppm **Vac 60\* | belt 120\***

Power Supply v/Hz **240/50** Consumption kW **0.5** Air Consumption cfm **DMT\***



Standard Bottle Label



Full Wrap Bottle Label



Cylindrical Products



*Uses single phase power and air supply of 5bar 70psi and 4cfm (dependent on machine type).  
\*General range for system. Specific label sizes and speeds agreed at time of build.*

# NOBAC 40B

Linerless Bottle Labeller

Expanding the trusted Nobac 40 range, this entry-level system brings Ravenwood’s sustainable linerless technology to the world of bottle labelling.

- Harnessing the Nobac 40 label head with an extended transfer unit
- Applies labels up to 200mm long and 40mm wide
- Application speeds of up to 75 bottles per minute
- Suited to a wide variety of bottle sizes and cylindrical products

Key Features

Label length mm **200\*** Label/Sleeve width mm **40\*** Pack height mm **N/A**

Speed ppm **75\*** Power Supply v/Hz **240/50** Consumption kW **0.5** Air Consumption cfm **4**



## NOBAC STACKER

**The Stacker suits many sectors and product applications, and offers the perfect solution for hand applying low volume linerless labels. Ideal for labelling a diverse range of foods for general application, and for adding promotional labels at key stages of the product's life cycle.**

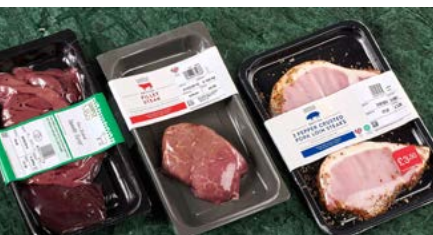
### **The new and improved Stacker now features:**

- Improved cabinet design with the addition of Nobac 5000 style 'barn' doors
- The new doors allow for more space to access the machine internals:
  - Loading labels and extra space for printer options
  - Printer options include thermal ribbon or Viper Inkjet coding capabilities

### **General operation:**

- Cuts and stacks Ravenwood linerless labels
- Cutting speeds of 100 labels per minute to a stacked height of 140mm
- Great for promotional mechanics during a product's lifecycle
- Useful for label converters for showcasing linerless labels at design stage
- Compact at just under one metre in width
- User-friendly with little training required for safe operation

## LINERLESS LABEL FORMATS



## SKIN PACK LINERLESS LABELS

Ravenwood's Skin Pack linerless labelling system can be applied to all types of skin pack trays, even the most super-protruding of food packaging. Items such as roasting joints are particularly bulky so this type of label will make for improved application and adhesion.

- Attractive and clean presentation on shelf – even after transportation and handling
- Secures food products in place – even 'super-protruding'
- Products can be displayed vertically
- Minimises leaking of fluids
- Easy opening options
- Food punnets (used in MAP) are replaced with shallow trays
- Fewer tray styles are required and they can be smaller, which means less packaging
- Applications include landscape full wrap, landscape full wrap protruding and landscape full wrap super protruding – up to 100mm above the height of the tray

## LINERLESS LABEL FORMATS



## SLIDEABLE & READY MEAL LINERLESS LABELS

The slideable linerless label is a reinvention of the traditional, hand applied cardboard sleeve, yet comes supplied on a roll. This type of label not only far outweighs traditional sleeves but has all the benefits of a standard linerless label. This label technology has been developed further for ready meal applications, suiting straight-to-oven food products.

- Sustainable alternative compared to hand applied sleeves
- Traditional sleeves are both costly and labour intensive due to the need for manual application
- Streamline production - multiple people, depending on line speed, can be involved in the labelling of one product
- With Ravenwood sleeves, only one reel of sleeves and one machine, operated by one person is required
- Sell-by dates can also be applied at the point of application whereas with manual application, these would need adding separately
- Save on space - with our ready meal sleeves, you can get up to 2000 labels on a roll (depending on width of sleeve) compared to 500 hand sleeves flat packed in a box

## LINERLESS LABEL FORMATS



## DIE CUT AND SHAPED LINERLESS LABELS

Ravenwood and its printer partners have produced shaped and die cut linerless labels for many years. This concept has been developed further and we can now shape the leading edge of the label for a totally bespoke and creative look across all linerless label formats.

- Aesthetically pleasing
- Attractive presentation at point of sale – stand out on shelf
- Ingredients and food produce is presented in a creative way
- The freshness of the food is visible through windows and the shaped leading edge
- One of a kind design





## FRUIT LID AND CARTONBOARD TRAY

The Fruit Lid when applied to a carton board tray, forms a complete pack for the supply of fresh fruit and vegetable products. The food grade packaging concept replaces the need for plastic flow wrap and single use plastic bags.

- Highly sustainable and 100% kerbside recyclable
- Food grade material available 170gsm to 300 gsm thickness
- Food grade adhesive designed for direct contact with food
- Application speeds up to 70 ppm
- Suitable for a wide range of fruits and vegetables



## LINERLESS LABEL FORMATS



## CUSTOM LINERLESS LABELS

**We like to think that we can rise to almost any packaging challenge.**

Our team of technologists and label developers will work closely with you in creating a bespoke solution, no matter the pack shape or design.



## CONVENTIONAL SELF-ADHESIVE APPLICATORS

These self-adhesive applicators complement our Nobac 5000 Linerless Label applicators. Also retrofittable to the Nobac 500 machine range.

### TROJAN FLASH LABELLER

The Trojan label applicator has set new standards in self-adhesive label applications.

The Trojan is an extremely small and cost effective promotional label applicator utilising a state-of-the-art servo drive unit.



### TROJAN SECURITY BASE LABELLER

The Trojan label applicator has set new standards in self-adhesive label applications. The Trojan is an extremely small and cost effective promotional label applicator utilising a state-of-the-art servo drive unit.

Please note: Due to the size and design, this label applicator cannot be fitted with a coder/printer.



## CODING EQUIPMENT



## CODING EQUIPMENT

Ravenwood works with manufacturers for the supply of thermal transfer, thermal inkjet and laser coding equipment. We supply a range of products for adding best-before or use-by dates, including batch numbers, product weights and barcodes.

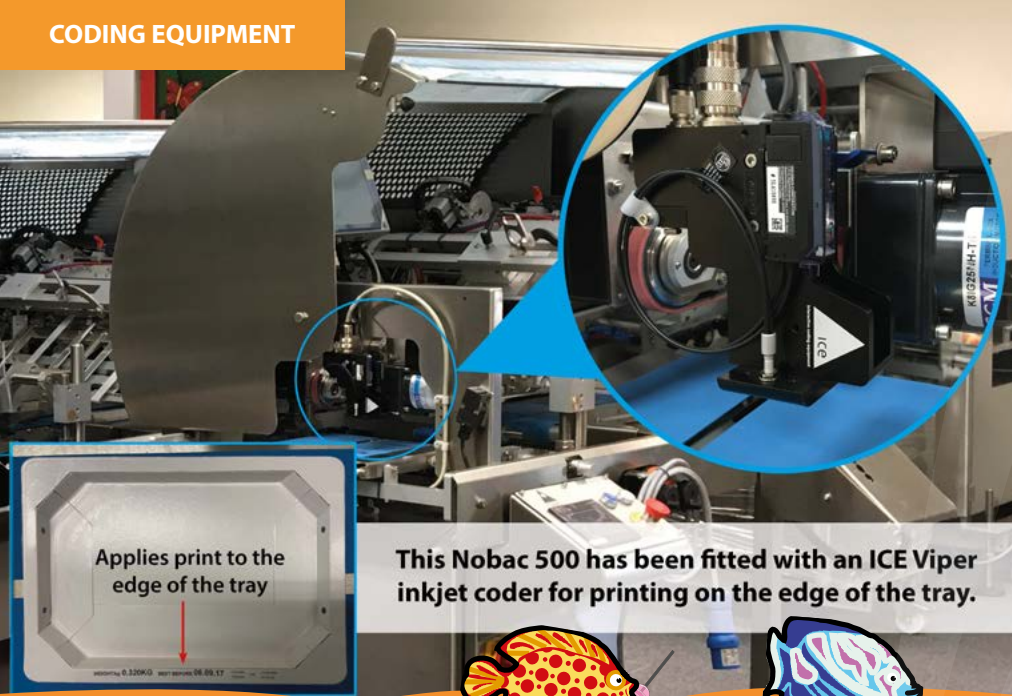
Coders can be added to our Nobac 5000 range for all fixed and catchweight products.

- Twin coder systems, including top and bottom print area on one label – 53mm and/or 107mm
- Single thermal coder with thermal inkjet or multiple heads
- Continuous print widths for all ready meal sleeves printing at 12.77mm height
- Data embedded barcode solutions with twin coder locations on to one sleeve
- Cardboard skin pack tray edge printing retrofitted or installed at build on to certain Ravenwood machines, enabling customers more flexibility to both label products with linerless labels or utilise the cardboard tray edge via thermal inkjet printing



  
markem•imaje





**This Nobac 500 has been fitted with an ICE Viper inkjet coder for printing on the edge of the tray.**



## PRODUCT FOCUS: ICE Viper Plus Coder

**The ICE Viper Plus Coder can add additional information to our linerless labels, including printing vital information to the edge of cardboard trays.**

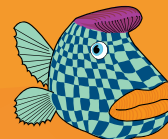
- Retrofittable to our Nobac range of machinery
- Ability to print 'best before' dates, product weight, cost and marketing mechanics
- Speeds up to 150 ppm are achievable
- Applies print to all linerless labels, as well as edge of trays
- Economical, as the Viper uses ink cartridges instead of ribbon, so avoiding downtime and cost for ribbon breaks
- Printing strips of 25mm is easily achieved due to double stacked cartridges
- Increased label print area due to Viper units being smaller with the ability to be moved to any position of the label
- Fast, consistent trouble free printing with excellent code clarity



## RAVENWOOD RIBBON – RW 51/71

The development of the RW 51/71 thermal ribbon, has spanned two years and features the best combination of wax and resin elements. Extensive testing has been carried out on all known and development substrates for excellent speed capabilities and accuracy.

- Excellent speeds, proven to reach 150ppm on all systems
- Application on a wide range of packaging
- Best properties for sharpness and darkness of print





## COM500 COATER

**The Com500 coating machine is the only coating system dedicated to running and delivering high quality Ravenwood linerless labels. Designed to work to the correct specification required for applying labels to food stuffs with applicators that fall under the Ravenwood Nobac 5000 machine range.**

- Simultaneous application of pressure sensitive adhesive and UV curable silicone lacquer
- Nordson adhesive pre-melting and delivery system allows for up to 12 slot heads with screw adjustments for glue stripe widths
- Keyence laser micrometer system
- Variable line widths from 3mm to 45mm achieved
- Slits and rewinds multiple lanes into finished reels, achieved in one pass
- Coating speeds up to 130 metres per minute
- Silicone is cured instantly using a GEW Rhino UV curing system
- Finished reels are wound on the 'three shaft turreting system' to required configuration
- NEW Stripe Roller Silicone Support Shaft speeds up changeovers
- NEW laser scanner allows for enhanced glue weight specifications
- Erhardt and Leimer web guidance throughout process



## VR – VISION SYSTEM

**Our Vision Inspection software will identify and check all information displayed on labelled packs including our linerless labels. The ultimate solution for brand and consumer protection.**

- Identifies and rejects errors enabling operator-free end-of-line automation
- Automatically detects faulty labels, printing errors and poor quality print
- Analyses label position, quantity and orientation
- Checks for barcodes, use-by dates and traceability codes
- All VR options available in top and/or base cameras



Compact Vision System mounted to a Nobac 5000 outfeed belt

## VC - COMPACT VISION INSPECTION SYSTEM

**This Vision Inspection System upgrade, offers high-performance label inspection in a simplified format. Designed to bolt seamlessly onto the Nobac 5000 outfeed belt – or most conveyor systems. Ideal for limited production spaces.**

- Features the full range of VR benefits but in a compact set up
- Utilises the same operator interface as the full VR system
- Intuitive product set up
- Includes Deep Learning OCR Module
- Compatible with QUOR and Q-Lite



VR Vision System & QUOR QMS

## QUOR - QUALITY MANAGEMENT SYSTEM

Imagine having your KPI report available in real time – anytime and anywhere? Well, the QUOR system does just that. QUOR interfaces to the VR Vision for set up and line recording, giving 100% product label verification.

- QUOR allows for product selection and storage of quality data
- Products are selected for checking on the QUOR interface
- Line quality data is uploaded, captured, stored and reported for analysis and traceability
- Images of all packs produced including rejected packs are recorded and can be retrieved
- Retailer compliant KPI reports are generated at the click of a button
- Data is managed securely both on and offsite, via PC based software or QUOR quality management app

## QUOR - Q-LITE

**Q-Lite is a simplified 'report only' version of the full QUOR quality management system. This streamlines option delivers instant, real-time reports on critical information, requiring minimal IT setup or intervention.**



VXR Linked to optional Check Weigher



VISION, X-RAY AND SEAL DETECTION  
WITH 'SAPPHIRE' TECHNOLOGY

## VXR X-RAY INSPECTION SYSTEM

Vision, X-ray and seal inspection with 'Sapphire' Technology.

**When combining its three technologies, the key functionality of the VXR system, is to identify and reject food trays that are seen to contain errors. Machines are built bespoke to feature just one of these technologies or all three for total control.**

### VXR Option for total inspection

- Total inspection incorporated into just 1.9m
- Vision label inspection
- X-ray contamination
- X-ray seal inspection

### XR Option

- X-ray contamination
- X-ray seal inspection
- Vision upgradeable

### VR Option

- Vision label
- Inspection X-ray
- Upgradeable

### VXR Linked to Optional Check Weigher

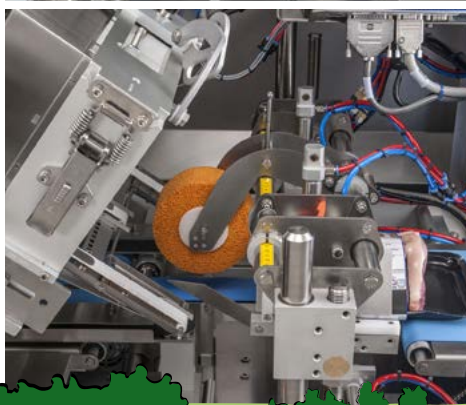
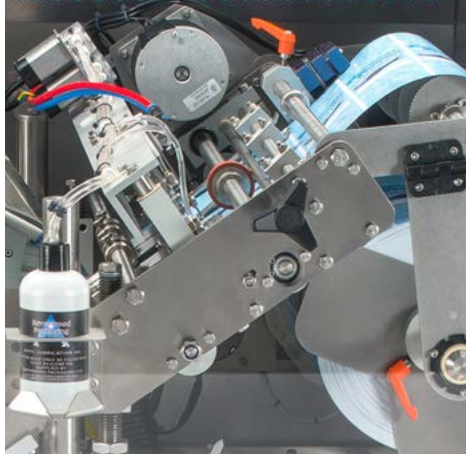
- Dynamic check weighing and monitoring
- Increased speeds from 120 packs to (up to) 140 packs per minute
- Higher running speeds for reduced operator intervention
- Option to integrate QUOR quality management software
- Compact solution that occupies less space than a conventional metal detector and checkweigher
- X-ray seal inspection

## BESPOKE SYSTEMS

Ravenwood can build all of the Nobac 5000 models featured in this booklet.

Outside of these variations, the machine specification would be considered as bespoke.

Please contact Jan Rees (UK & Middle East Sales) or Dave Gooding (Rest of the World) by referring to the inside back cover of this brochure.



## PRELOVED PROGRAMME

Our 'Preloved' programme undertakes machinery work from complete set up to full rebuild, as well as refurbishments and conversions on all Ravenwood linerless labelling machinery that fall under the Nobac 500/5000 machine range.

To discuss your requirements further, contact your local sales representative by referring to the inside back cover of this brochure.

## WHY LINERLESS?

A linerless label is a pre-printed pressure sensitive label that has no need for liner or backing paper.

The labels are wound on a roll or reel and feature a silicone strip applied to the top of the label that prevents the adhesive from the underside sticking to the label below.

These simple adhesive strips applied to the underside, means that there is an increased surface print area for featuring additional information and marketing mechanics to the back of the label.



**Zero Waste Liner to Landfill**  
Even waste edge trimmings are recyclable



**Slash Carbon Emissions**  
Reduced transportation, labour and storage costs

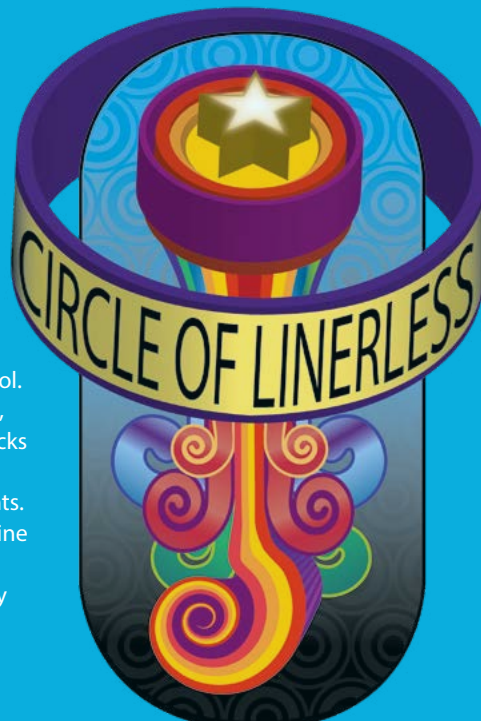


**Increased Surface Print Area**  
Feature additional information to the back of the label

At Ravenwood, we don't just sell machines, we provide the complete linerless solution. The 'Circle of Linerless' is a term coined by Ravenwood to encapsulate our joined-up approach to the whole process.

We build the Com500 coater to make the labels, the Nobac 5000 applicators to apply them and we work with the raw material suppliers to develop the best substrates, adhesives and silicones to work in a consistent and quality driven manner.

Our game-changing innovation, the VXR® marks the culmination of our processes, ensuring top-notch end-of-line quality control. Through a combination of vision technology, x-ray capabilities and seal inspection, our packs boast flawless linerless labels and guarantee food products that are free from contaminants. Our worldwide network of printer and machine distributors are also experts in their specific domains, offering you peace of mind at every stage of the labelling process.



# RAVENWOOD LINERLESS LABELS

## REAL WORLD IMPACT

**At Ravenwood, we help global food producers:**

Reduce label waste by 100%

Cut packaging weight by up to 40%

Increase throughput and automate EPR (Extended Producer Responsibility)  
compliant labelling

Streamline packaging lines

Meet sustainability goals



## HOW LINERLESS LABELLING SOLVES KEY CHALLENGES

### **No Backing Waste = Less Landfill**

Traditional self-adhesive labels use a silicone liner – non-recyclable

Linerless eliminates this waste stream entirely

### **Lower Packaging Weight**

Linerless rolls are lighter and more compact = fewer truckloads

Directly supports waste and emissions reduction targets

### **Easier Compliance**

More sustainable packaging = lower EPR modulated fees

Simplified material use helps with mandatory reporting

### **Energy & Efficiency Gains**

Less downtime for roll changes

Compatible with automation and high-speed labelling systems

# GET IN TOUCH

## UK & MIDDLE EAST SALES

Jan Rees +44 (0)7770 121427

## SCOTLAND & NORTHERN IRELAND SALES

Dave Mathison +44 (0)7811 117328

## EUROPEAN SALES

James Wilbraham +44 (0)7778 158875

## AMERICAS & AFRICA SALES

**Print/Label & Machinery Sales:** Bob Elvin +44 (0)7557 335653

## ASIA PACIFIC SALES

Ian Towsey +61 (0)490 942689

## REST OF THE WORLD

David Gooding +44 (0)7341 885190

## PRELOVED PROGRAMME

A Ravenwood machine is for life: Please contact your local sales representative.

## SERVICE

Service Bookings: Rob Knight +44 (0)1284 749144 | +44 (0)7884 667518

## OUT OF HOURS EMERGENCY CALL OUTS: +44 (0)7866 512758

## PARTS & CONSUMABLES

Consumables Orders: Emma Staines +44 (0)1284 749144

## MARKETING

For press and general enquiries: Natalie Bell +44 (0)1284 749144

## ACCOUNTS

Accounts payable and receivable: Beverley Smith +44 (0)1284 749144





**UK | EUROPE | AMERICAS | ASIA PACIFIC | REST OF THE WORLD**

[www.ravenwood.co.uk](http://www.ravenwood.co.uk)

**UK Headquarters:** Ravenwood Packaging Ltd, Unit 1, Brunel Business Court,  
Eastern Way, Bury St Edmunds, Suffolk IP32 7AJ

**T:** +44 (0)1284 749144